

MULTILEVEL PROCESSOR-SHARING QUEUEING MODELS FOR TIME-SHARED SYSTEMS*

L. Kleinrock and R. R. Muntz

University of California

Los Angeles, California USA

ABSTRACT

Scheduling algorithms for time-shared computing facilities are considered in terms of a queueing theory model. The extremely useful limit of "processor-sharing" is adopted, wherein the quantum of service shrinks to zero; this approach greatly simplifies the problem. A class of algorithms is studied for which the scheduling discipline may change for a given job as a function of the amount of service received by that job. These multilevel disciplines form a natural extension to many of the disciplines previously considered.

Solved for is the average response time for jobs conditioned on their service requirement. Explicit solutions are given for the system M/G/1 in which levels may be first-come-first-served (FCFS) or feedback (FB) in any order; in addition, the round-robin (RR) may be used at the first level. An integral equation is developed which defines (but does not as yet provide a solution for) the RR case at arbitrary level. The special case in which RR is used at the last level is solved under the condition that the service time behave exponentially for this last level.

Examples are described for which the average response time is plotted. These examples display the great versatility of the results and demonstrate the flexibility available for the intelligent design of discriminatory treatment among jobs (in favor of short jobs and against long jobs) in time-shared system design.

1. INTRODUCTION

Queueing models have been used successfully in the analysis of time-shared computer systems since the appearance of the first applied paper in this field in 1964 [1]. The recent survey [2] of such analytical work attests to this fact. One of the first papers to consider the effect of feedback in queueing systems was due to Takacs [3].

Generally, an arrival enters the time-shared system and competes for the attention of a single processing unit. This arrival is forced to wait in a system of queues until he is permitted a quantum of service time; when this quantum expires, he is then required to join the system of queues to await his second quantum, etc. The precise model for the system is developed in Section 2. In 1967 the notion of allowing the quantum to shrink to zero was first studied [4] and is referred to as "processor-sharing." As the name implies, this zero-quantum limit provides a share or portion of the processing unit to many customers simultaneously; in the case of round-robin (RR) scheduling [4], all customers in the system simultaneously share (equally or on a priority basis) the processor, whereas in the feedback (FB) scheduling [5] only that set of customers with the smallest attained service share the processor. We use the term processor-sharing here since it is the processing unit itself (the central processing unit of the computer) which is being shared among the set of the customers; the phrase "time-sharing" will be reserved to imply that customers are waiting sequentially for their turn to use the entire processor for a finite quantum. In studying the literature one finds that the obtained results appear in a rather complex form and this complexity arises from the fact that the quantum is typically assumed to be finite as opposed to infinitesimal. When one allows the quantum to shrink to zero, giving rise to a processor-sharing system, then the difficulty in analysis as well as in the form of results disappears in large part; one is thus encouraged to consider only the processor-sharing case. Clearly, this limit of infinitesimal quantum is an ideal and can seldom be reached in practice due to considerations of swap time; nevertheless, its extreme simplicity in analysis and results brings us to the studies reported in this paper.

The two processor-sharing systems studied in the past are the RR and the FB [4,5]. Typically, the quantity solved for is the expected response time conditioned on the customer's service time; response time is the elapsed time from when a customer enters the system until he leaves completely serviced. This measure is especially important since it exposes the preferential treatment given to short jobs at the expense of the long jobs. Clearly, this discrimination is purposeful since it is the desire in time-shared systems that small requests should be allowed to pass through the system quickly. In 1969 the distribution for the response time in the RR system was found [6]. In this paper we consider the case of mixed scheduling algorithms whereby customers are treated according to the RR algorithm, the FB algorithm, or first come first served (FCFS) algorithm, depending upon how much total service time they have already received. Thus, as a customer proceeds through the system obtaining service at various rates he is treated according to different disciplines; the policy which is applied among customers in different levels is that of the FB system as explained further in Section 2. This natural generalization of the previously studied processor-sharing systems allows one to create a large number of new and interesting disciplines whose solutions we present.

*This work was supported by the Advanced Research Projects Agency of the Department of Defense (DAHC-15-69-C-0285).

2. THE MODEL

The model we choose to use in representing the scheduling algorithms is drawn from queueing theory. This corresponds to the many previous models studied [1,2,4,5,6,7,8], all of which may be thought of in terms of the structure shown in Fig. 2.1. In this figure we indicate that new requests enter the system of queues upon arrival. Whenever the computer's central processing unit (CPU) becomes free, some customer is allowed into the service facility for an amount of time referred to as a quantum. If during this quantum, the total accumulated service for a customer equals his required service time, then he departs the system; if not, at the end of his quantum, he cycles back to the system of queues and waits until he is next chosen for additional service. The system of queues may order the customers according to a variety of different criteria in order to select the next customer to receive a quantum. In this paper, we assume that the only measure used in evaluating this criterion is the amount of attained service (total service so far received).

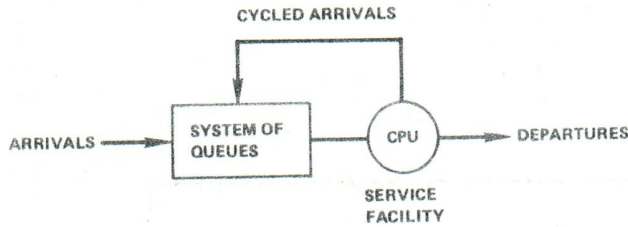


Figure 2.1. The Feedback Queueing Model

In order to specify the scheduling algorithm in terms of this model, it is required that we identify the following:

a. The customer interarrival time distribution. We assume this to be exponential, i.e.,

$$P[\text{interarrival time} \leq t] = 1 - e^{-\lambda t} \quad t \geq 0 \quad (2.1)$$

where λ is the average arrival rate of customers.

b. The distribution of required service time in the CPU. This we assume to be arbitrary (but independent of the interarrival times). We thus assume

$$P[\text{service time} \leq x] = B(x) \quad (2.2)$$

Also assume $1/\mu =$ average service time

c. The quantum size. Here we assume a processor-shared model in which customers receive an equal but vanishingly small amount of service each time they are allowed into service. For more discussion of such systems, see [4,6,7].

d. The system of queues. We consider here a generalization and consolidation of many systems studied in the past. In particular, we define a set of attained service times $\{a_i\}$ such that

$$0 = a_0 < a_1 < a_2 < \dots < a_N < a_{N+1} = \infty \quad (2.3)$$

The discipline followed for a job when it has attained service, τ , in the interval

$$a_{i-1} \leq \tau \leq a_i \quad i = 1, 2, \dots, N+1 \quad (2.4)$$

will be denoted as D_i . We consider D_i for any given level i to be either: FIRST COME FIRST SERVED (FCFS); PROCESSOR SHARED-FB (FB); or ROUND-ROBIN PROCESSOR SHARED (RR). The FCFS system needs no explanation. The FB system gives service next to that customer who so far has least attained service; if there is a tie (among K customers, say) for this position, then all K members in the tie get served simultaneously (each attaining useful service at a rate of $1/K$ sec/sec), this being the nature of processor sharing systems. The RR processor sharing system shares the service facility among all customers present (say J customers)

giving attained service to each at a rate of $1/J$ sec/sec. Moreover, between intervals, the jobs are treated as a set of FB disciplines. See Fig. 2.2. For example, for $N = 0$, we have the usual single-level case of either FCFS, RR or FB.

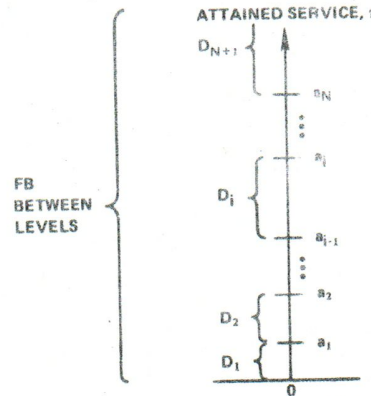


Figure 2.2. Intervals of Attained Service, with Disciplines, D_i

For $N = 1$, we could have any of nine disciplines (FCFS followed by FCFS, ..., RR followed by RR); note that FB followed by FB is just a single FB system (due to the overall FB policy between levels).

As an illustrative example, consider the $N = 2$ case shown in Fig. 2.3.

Any new arrivals begin to share the processor in a RR fashion with all other customers who so far have less than 2 seconds of attained service. Customers in the range of $2 < \tau < 6$ may get served only if no customers present have had less than 2 seconds of service; in such a case, that customer (or customers) with the least attained service will proceed to occupy the service in an FB fashion until they either leave, or reach $\tau = 6$, or some new customer arrives (in which case the overall FB rule provides that the RR policy at level 1 preempts). If all customers have $\tau > 6$, then the "oldest" customer will be served to completion unless interrupted by a new arrival. The history of some customers in this example system is shown in Fig. 2.4. We denote customer n by C_n . Note that the slope of attained service varies as the number of customers simultaneously being serviced changes. We see that C_2 required 5 seconds of service and spent 14 seconds in system (i.e., response time of 14 seconds).

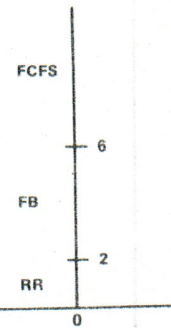


Figure 2.3. Example of $N = 2$

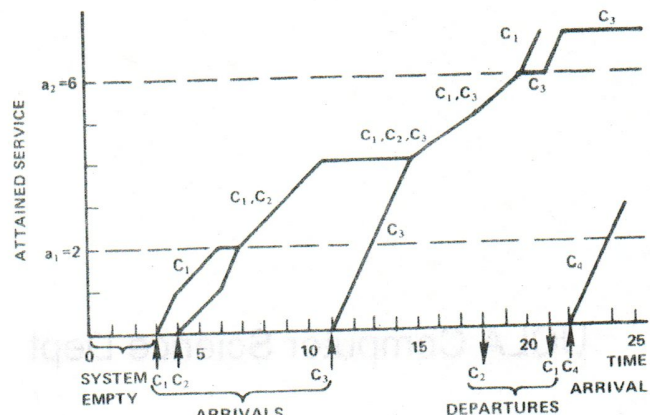


Figure 2.4. History of Customers in Example

So much for the system specification. We may summarize by saying that we have an M/G/1 queueing system* model with processor sharing and with a generalized multilevel scheduling structure.

The quantity we wish to solve for is

$$T(t) = E[\text{response time for a customer requiring a total of } t \text{ seconds of attained service}] \quad (2.5)$$

We further make the following definitions:

$$T_i(t) = E\{\text{time spent in interval } i \text{ (} a_{i-1}, a_i \text{) for customers requiring a total of } t \text{ seconds of attained service}\} \quad (2.6)$$

We note that

$$T_i(t) = T_i(t') \quad \text{for } t, t' > a_i \quad (2.7)$$

Furthermore, we have, for $a_{k-1} < t \leq a_k$, that

$$T(t) = \sum_{i=1}^k T_i(t) \quad (2.8)$$

Also, we find it convenient to define the following quantities with respect to $B(t)$ truncated at $t = x$:

$$\bar{t}_{<x} = \int_0^x t dB(t) + x \int_x^\infty dB(t) \quad (2.9)$$

$$\bar{t}_{<x}^2 = \int_0^x t^2 dB(t) + x^2 \int_x^\infty dB(t) \quad (2.10)$$

$$\rho_{<x} = \lambda \bar{t}_{<x} \quad (2.11)$$

$$W_x = \frac{\lambda \bar{t}_{<x}^2}{2(1 - \rho_{<x})} \quad (2.12)$$

Note that W_x represents the expected work found by a new arrival in the system M/G/1 where the service time distribution is $B(t)$ truncated at x .

3. RESULTS FOR MULTILEVEL QUEUEING SYSTEMS

We wish to find an expression for $T(t)$, the mean system time (i.e., average response time) for jobs with service time t such that $a_{i-1} < t \leq a_i$, i.e., jobs which reach the i^{th} level queue and then leave the system. To accomplish this it is convenient to isolate the i^{th} level to some extent. We make use of the following two facts.

1. By the assumption of preemptive priority of lower level queues (i.e., FB discipline between levels) it is clear that jobs in levels higher than the i^{th} level can be ignored. This follows since these jobs cannot interfere with the servicing of the lower levels.
2. We are interested in jobs that will reach the i^{th} level queue and then depart from the system before passing to the $(i+1)^{\text{st}}$ level. The system time of such a job can be thought of as occurring in two parts. The first portion is the time from the job's arrival to the queueing system until the group at the i^{th} level is serviced for the first time after this job has reached the i^{th} level. The second portion starts with

the end of the first portion and ends when the job leaves the system. It is easy to see that both the first and second portions of the job's system time are unaffected by the service disciplines used in levels 1 through $i-1$. Therefore, we can assume any convenient disciplines. In fact, all these levels can be lumped into one equivalent level which services jobs with attained service between 0 and a_{i-1} seconds using any service discipline.

From (1) and (2) above it follows that we can solve for $T(t)$ for jobs that leave the system from the i^{th} level by considering a two-level system. The lower level services jobs with attained service between 0 and a_{i-1} whereas the second level services jobs with attained service between a_{i-1} and a_i . Jobs that would have passed to the $(i+1)^{\text{st}}$ level after receiving a_i seconds of service in the original system are now assumed to leave the system at that point. In other words the service time distribution is truncated at a_i .

3.1. i^{th} Level Discipline is FB

Consider the two-level system with the second level corresponding to the i^{th} level of the original system. Since we are free to choose the discipline used in the lower level, we can assume that the FB discipline is used in this level as well. Clearly the two-level system behaves like a single level FB system with service time distribution truncated at a_i . The solution for such a system is known [5,11]:

$$T(t) = \frac{t}{1 - \rho_{<t}} + \frac{\lambda \bar{t}_{<t}^2}{2(1 - \rho_{<t})^2} \quad (3.1)$$

3.2. i^{th} Level Discipline is FCFS

Consider again the two-level system with breakpoints at a_{i-1} and a_i . Regardless of the discipline in the lower level, a tagged job entering the system will be delayed by the sum of the work currently in both levels plus any new arrivals to the lower level queue during the interval this job is in the system. These new arrivals form a Poisson process with parameter λ and their contribution to the delay is a random variable whose first and second moments are $\bar{t}_{<a_i}$ and $\bar{t}_{<a_i}^2$ respectively. By delay cycle analysis [9] we have

$$T(t) = \frac{W_{a_i} + t}{1 - \rho_{<a_i}} \quad (3.2)$$

It is also possible to use these methods for solving last-come-first-served and random order of service at any level.

3.3. i^{th} Level Discipline is RR

Results to date allow explicit solutions for only two cases. (1) RR in the first level and (2) RR in the last level with the added restriction that once a job has reached this level the distribution of remaining service time is exponential. The analysis will be developed for the general case as far as possible before being restricted to special cases.

We start by considering the two-level system with breakpoints at a_{i-1} and a_i . Consider the busy periods of the lower level. During each such busy period there may be a number of jobs that pass to the higher level. We choose to consider these arrivals to the higher level as occurring at the end of the lower level busy period so that there is a bulk arrival to the higher level at this time. We also choose to temporarily delete these lower level busy periods from the time axis. In effect we create a virtual time axis telescoped to delete the lower level busy periods. Since the time from the end of one lower level busy period to the start of the next is exponentially distributed (Poisson arrivals!), the arrivals to the higher level appear

*M/G/1 denotes the single-server queueing system with Poisson arrivals and arbitrary service time distribution.

in virtual time to be bulk arrivals at instants generated from a Poisson process with parameter λ .

Consider a job that requires $t = a_{i-1} + \tau$ seconds of service ($0 < \tau \leq a_1 - a_{i-1}$). Let α_1 be the mean real time the job spends in the system until its arrival (at the end of the lower level busy period) at the higher level queue. Let $\alpha_2(\tau)$ be the mean virtual time the job spends in the higher level queue.

α_1 can be calculated using delay cycle analysis. The initial delay is equal to the mean work the job finds in the lower level on arrival plus the a_{i-1} seconds of work that it contributes to the lower level. This initial delay is expanded by new jobs arriving at the lower level by a factor of $1/(1 - \rho_{<a_{i-1}})$ (see [9]). Therefore

$$\alpha_1 = \frac{1}{1 - \rho_{<a_{i-1}}} \{w_{a_{i-1}} + a_{i-1}\} \quad (3.3)$$

If $\alpha_2(\tau)$ is the mean virtual time the job spends in the higher level, we can easily convert this to the mean real time spent in this level. In the virtual time interval $\alpha_2(\tau)$ there are an average of $\lambda\alpha_2(\tau)$ lower level busy periods that have been ignored. Each of these has a mean length of $\frac{\bar{t}_{<a_{i-1}}}{1 - \rho_{<a_{i-1}}}$.

Therefore, the mean real time the job spends in the higher level is given by

$$\alpha_2(\tau) + \lambda\alpha_2(\tau) \frac{\bar{t}_{<a_{i-1}}}{1 - \rho_{<a_{i-1}}} = \frac{\alpha_2(\tau)}{1 - \rho_{<a_{i-1}}} \quad (3.4)$$

Combining these results we see that a job requiring $t = a_{i-1} + \tau$ seconds of service has mean system time given by

$$T(a_{i-1} + \tau) = \frac{1}{1 - \rho_{<a_{i-1}}} \{w_{a_{i-1}} + a_{i-1} + \alpha_2(\tau)\} \quad (3.5)$$

The only unknown quantity in this equation is $\alpha_2(\tau)$. To solve for $\alpha_2(\tau)$ we must, in general, consider an M/G/1 system with bulk arrivals and RR processor sharing. The only exception is the case of RR at the first level which has only single arrivals. Since the higher level queues can be ignored, the solution in this exceptional case is the same as for a round-robin single level system with service time distribution truncated at a_1 . Therefore, from [8] we have for the first level

$$T(t) = \frac{t}{1 - \rho_{<a_1}} \quad 0 \leq t \leq a_1 \quad (3.6)$$

Let us now consider the bulk arrival RR system in isolation in order to solve for the virtual time spent in the higher level queue, $\alpha_2(\tau)$ which we temporarily write as $\alpha(\tau)$.

3.3.1. The Bulk Arrival, RR Model

We approach this problem by first considering a discrete time system with quantum size $q > 0$. We assume that arrivals and departures take place only at times that are integral multiples of q . For small q any continuous distribution can be approximated. By letting q approach 0 equations for continuous time systems can be found.

Let $n(iq) =$ the mean number of jobs in the system with iq seconds of attained service. (3.7)

$\sigma_i =$ the probability that a job which has received iq seconds of service will require more than $(i+1)q$ seconds of service. (3.8)

$\bar{a} =$ the mean bulk size of arrivals. (3.9)

$b =$ the mean number of arrivals with a tagged job. (3.10)

Since we intend to let q approach 0, the position of the tagged job with respect to the jobs that arrive in the same group is not important. We will assume for convenience that the tagged job is the last job in the group.

The mean time until the tagged job has received its first quantum of service is given by

$$T_1 = \sum_{j=0}^{\infty} n(jq)q + bq + q \quad (3.11)$$

In general, the mean time between the $(i-1)^{st}$ and i^{th} quantum of service to the tagged job is given by

$$T_i = \sum_{j=0}^{\infty} (n(jq)\sigma_j\sigma_{j+1} \dots \sigma_{j+i-2}q) + \sum_{j=1}^{i-1} (\lambda\bar{a}T_j\sigma_0\sigma_1 \dots \sigma_{i-j-2}q) + q + b[\sigma_0\sigma_1 \dots \sigma_{i-1}]q \quad (3.12)$$

The first term represents the time required by those jobs which were initially in the system and will still be there after the tagged job has received $i-1$ quanta of service. The second term is the contribution due to jobs that have arrived since the tagged job entered the system. The third term is due to the tagged job itself. The last term results from those jobs which arrived with the tagged job and require more than $i-1$ quanta of service.

Dividing both sides of Eq. (3.12) by q we get

$$\frac{T_i}{q} = \sum_{j=0}^{\infty} n(jq)\sigma_j\sigma_{j+1} \dots \sigma_{j+i-2} + \sum_{j=1}^{i-1} \lambda\bar{a}T_j\sigma_0\sigma_1 \dots \sigma_{i-j-2} + 1 + b\sigma_0\sigma_1 \dots \sigma_{i-1} \quad (3.13)$$

Let $iq = t$ and $jq = x$. Then as $q \rightarrow 0$:

$$\frac{T_i}{q} + \alpha'(t) \equiv \frac{d\alpha(t)}{dt} \quad (3.14)$$

$$\sigma_j\sigma_{j+1} \dots \sigma_{j+i-2} + \frac{1 - B(x+t)}{1 - B(x)} \quad (3.15)$$

$$n(jq) + n(x) \quad (3.16)$$

$$\sigma_0\sigma_1 \dots \sigma_{i-j-2} + 1 - B(t-x) \quad (3.17)$$

$$\sigma_0\sigma_1 \dots \sigma_{i-1} + 1 - B(t) \quad (3.18)$$

Therefore as $q \rightarrow 0$ Eq. (3.13) becomes

$$\alpha'(t) = \int_0^{\infty} n(x) \frac{1 - B(x+t)}{1 - B(x)} dx + \lambda\bar{a} \int_0^t \alpha'(x) [1 - B(t-x)] dx + 1 + b[1 - B(t)] \quad (3.19)$$

that

From Kleinrock and Coffman [7] we also have

$$n(x) = \lambda \bar{a} [1 - B(x)] \alpha'(x) \quad (3.20)$$

Substituting for $n(x)$ we have

$$\begin{aligned} \alpha'(t) = & \lambda \bar{a} \int_0^{\infty} \alpha'(x) [1 - B(x+t)] dx \\ & + \lambda \bar{a} \int_0^t \alpha'(x) [1 - B(t-x)] dx \\ & + 1 + b[1 - B(t)] \end{aligned} \quad (3.21)$$

This integral equation defines $\alpha'(t)$ for the case of bulk arrival to a RR processor-sharing M/G/1 system. Unfortunately no general solution has been found for this equation in terms of $B(t)$. However, for exponential service time the equation can be solved.

3.3.1a. M/M/1 with Bulk Arrival. In this

case

$$B(t) = 1 - e^{-\mu t} \quad (3.22)$$

Therefore the Eq. (3.21) becomes

$$\begin{aligned} \alpha'(t) = & \lambda \bar{a} \int_0^{\infty} \alpha'(x) e^{-\mu(x+t)} dx \\ & + \lambda \bar{a} \int_0^t \alpha'(x) e^{-\mu(t-x)} dx \\ & + 1 + b e^{-\mu t} \end{aligned} \quad (3.23)$$

From Eq. (3.20) we obtain

$$\lambda \bar{a} \int_0^{\infty} \alpha'(x) e^{-\mu x} e^{-\mu t} dx = \int_0^{\infty} n(x) e^{-\mu t} dx = \bar{n} e^{-\mu t} \quad (3.24)$$

where $\bar{n} = E[\text{no. found in system by a new arrival}]$. Using this expression for the first term on the right-hand side of Eq. (3.23) and taking Laplace transforms we obtain

$$s \alpha^*(s) = \frac{s(\bar{n} + b + 1) + \mu}{s(s + \mu - \lambda \bar{a})} \quad (3.25)$$

Inverting, we get for $t \geq 0$ (observing that $\alpha'(0) = \bar{n} + b + 1$),

$$\alpha'(t) = \frac{1}{1 - \rho} + \frac{(\bar{n} + b + 1)[1 - \rho] - 1}{1 - \rho} e^{-\mu(1-\rho)t} \quad (3.26)$$

where

$$\rho = \frac{\lambda \bar{a}}{\mu} \quad (3.27)$$

Here, \bar{n} and b are unknown quantities which need not be solved for directly. Instead we combine them in a new unknown $C = \bar{n} + b - \frac{\rho}{1 - \rho}$ and we obtain

$$\alpha'(t) = \frac{1}{1 - \rho} + C e^{-\mu(1-\rho)t} \quad (3.28)$$

Integrating and using the initial condition that $\alpha(0) = 0$ we get

$$\alpha(t) = \frac{t}{1 - \rho} + \frac{C}{\mu(1 - \rho)} [1 - e^{-\mu(1-\rho)t}] \quad (3.29)$$

In the next section we will evaluate the constant C and calculate \bar{a} for a multilevel queueing system with RR at the last level where the service time distribution may be general up to this level, but must be exponential in this last (semi-infinite) level; i.e., $B(x)$ must have an exponential tail and we denote this system by M/GM/1. The same method can be used to complete the solution for a single level queue with bulk arrivals.

3.3.1b. M/GM/1 with Bulk Arrival. Returning to our discussion of the two level queueing system with breakpoints at a_{i-1} and a_i , we had Eq. (3.5)

$$T(a_{i-1} + \tau) = \frac{1}{1 - \rho_{<a_{i-1}}} \left\{ W_{a_{i-1}} + a_{i-1} + \alpha_2(\tau) \right\} \quad (3.5)$$

where $\alpha_2(\tau)$ was the mean virtual time spent in the higher level queue. But in virtual time this is the solution for the bulk arrival case just studied. The study in the general case M/G/1 led to an integral equation, Eq. (3.21), for which no more explicit solution was obtained. However, in the case of an exponential distribution, we have the solution given in Eq. (3.29). Thus, we may permit RR at the first level (see Eq. (3.6)) in M/G/1 or at the last level in M/GM/1. In the latter case, we therefore consider the equivalent two-level system in which the breakpoints a_{i-1} and a_i are restricted to a_N and ∞ , respectively.

Thus, for the case $t = a_N + \tau$ we have from Eq. (3.29) that

$$\alpha_2(\tau) = \alpha(\tau) = \frac{\tau}{1 - \rho} + d[1 - e^{-\mu(1-\rho)\tau}] \quad (3.30)$$

where $C = \mu(1 - \rho)d$. Therefore, from Eq. (3.5),

$$T(a_N + \tau) = \frac{1}{1 - \rho_{<a_N}} \left\{ W_{a_N} + a_N + \frac{\tau}{1 - \rho} + d[1 - e^{-\mu(1-\rho)\tau}] \right\} \quad (3.31)$$

In addition to the constant d we also need to solve for \bar{a} , the mean size of the bulk arrivals to the RR queue, since this is contained in $\rho = \frac{\lambda \bar{a}}{\mu}$. This we do for the general case a_{i-1}, a_i . \bar{a} is just the mean number of jobs that arrive during a lower level busy period and require more than a_{i-1} seconds of service. Therefore \bar{a} must satisfy the equation

$$\bar{a} = \lambda \bar{t}_{<a_{i-1}} \bar{a} + [1 - B(a_{i-1})] 1 \quad (3.32)$$

In this equation $\lambda \bar{t}_{<a_{i-1}}$ is the mean number of jobs that arrive during the service time of the first job in the busy period. Since each of these jobs in effect generates a busy period, there are an average of $\lambda \bar{t}_{<a_{i-1}} \bar{a}$ arrivals to the upper level queue due to these jobs. The second term is just the average number of times that the first job in the busy period will require more than a_{i-1} seconds of service.

Clearly then

$$\bar{a} = \frac{1 - B(a_{i-1})}{1 - \rho_{<a_{i-1}}} \quad (3.33)$$

Now we may complete the solution for $t = a_N + \tau$ by solving for C by conserving the mean work in the system. Since the single server works at a constant rate as long as there is any work in the system, the amount of work in the system at any time is independent of the service disciplines and system levels. It follows immediately that the mean work in the system is a constant (depending only on λ and the service time distribution). The mean work in the system is given by W_{∞} (see Eq. (2.12)).

We also have from Eq. (3.20) that $n(t) = \lambda [1 - B(t)] T'(t)$ where $n(t)$ is the mean number of jobs in the system with t seconds of attained service. The mean remaining service requirement for a job which has already received t seconds of service is given by

$$\int_t^{\infty} \frac{x dB(x)}{1 - B(t)} - t \quad (3.34)$$

Therefore the mean work in the system is also given by

$$W_{\infty} = \int_0^{\infty} n(t) \left\{ \int_t^{\infty} \frac{x dB(x)}{1-B(t)} - t \right\} dt \quad (3.35)$$

or

$$W_{\infty} = \int_0^{\infty} \lambda [1-B(t)] T'(t) \left\{ \int_t^{\infty} \frac{x dB(x)}{1-B(t)} - t \right\} dt \quad (3.36)$$

With no loss of generality, we may assume that the RR discipline is the lower level queue discipline. In this case we have from Eqs. (3.6), (3.31) and W_{∞} from Eq. (2.12) that

$$T(t) = \begin{cases} \frac{t}{1-\rho_{<a_N}} & 0 \leq t \leq a_N \\ \frac{1}{1-\rho_{<a_N}} \left\{ \frac{\lambda t^2}{2(1-\rho_{<a_N})} + a_N + \frac{t-a_N}{1-\rho} \right. \\ \left. + d [1 - e^{-\mu(1-\rho)(t-a_N)}] \right\} & t > a_N \end{cases} \quad (3.37)$$

Using this expression for $T(t)$ in Eq. (3.36) we can solve for d . Since $B(x)$ is arbitrary in the range $0 \leq t \leq a_N$ (and exponential for $t > a_N$) the solution is not expressible in a compact form. When $B(x)$ is exponential over $0 < x < \infty$ the solution is simplified. In particular for all t

$$\int_t^{\infty} \frac{x dB(x)}{1-B(t)} - t = \frac{1}{\mu} \quad (3.38)$$

Therefore

$$W_{\infty} = \int_0^{\infty} \lambda [1-B(t)] T'(t) \frac{1}{\mu} dt = \frac{\lambda}{\mu} \int_0^{\infty} e^{-\mu t} T'(t) dt \quad (3.39)$$

Now using the Eq. (3.37) for $T(t)$ we have

$$W_{\infty} = \frac{\lambda}{\mu} \left\{ \frac{[1 - e^{-\mu a_N}]}{\mu(1-\rho_{<a_N})} + e^{-\mu a_N} \frac{\lambda t^2}{2(1-\rho_{<a_N})^2} + \frac{e^{-\mu a_N}}{\mu(1-\rho)(1-\rho_{<a_N})} + \frac{C e^{-\mu a_N}}{\mu(2-\rho)(1-\rho_{<a_N})} \right\} \quad (3.40)$$

Setting $W_{\infty} = \frac{\lambda t_{< \infty}^2}{2(1-\rho_{< \infty})} = \frac{\lambda/\mu^2}{1-\lambda/\mu}$ we essentially have a

solution for C . The solution is illustrated later in the examples section.

4. EXAMPLES

In this section we demonstrate through examples the nature of the results we have obtained. Recall that we have given explicit solutions for our general model in the case $M/G/1$ with processor sharing where the allowed scheduling disciplines within a given level may be either FCFS or FB. Moreover, for this general system we allow RR at level 1. That is, for the case $M/G/1$,

$$D_i = \begin{cases} RR, FCFS, FB & i = 1 \\ FCFS, FB & i = 2, 3, \dots, N+1 \end{cases} \quad (4.1)$$

Furthermore, in the case $M/G/1$ we permit

$$D_i = \begin{cases} RR, FCFS, FB & i = 1 \\ FCFS, FB & i = 2, 3, \dots, N \\ RR, FCFS, FB & i = N+1 \end{cases} \quad (4.2)$$

That is, we also permit RR at the highest level if $B(x)$ is of exponential form in the interval $a_N < x$.

We begin with three examples from the system $M/M/1$. As mentioned in Section 2, we have nine disciplines for the case $N = 1$. This comes about from Eq. (4.2) where we allow any one of three disciplines at level 1 and any one of three disciplines at level 2. As we have shown, the behavior of the average conditional response time in any particular level is independent of the discipline in all other levels. In Fig. 4.1 we show the behavior of each of the three disciplines for the system $N = 1$.

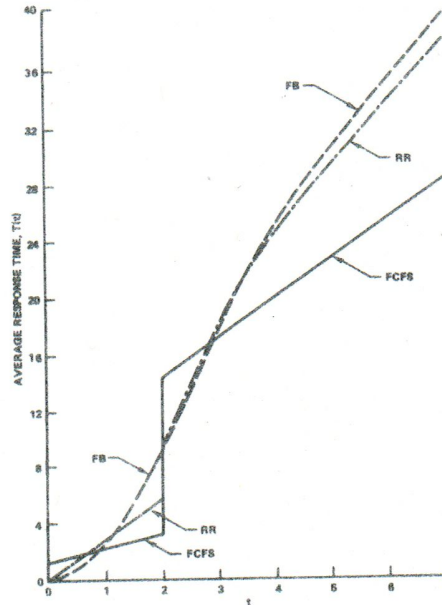


Figure 4.1. Response Time Possibilities for $N = 1$, $M/M/1$, $\mu = 1$, $\lambda = .75$, $a_1 = 2$

In this case we have assumed $\mu = 1$, $\lambda = 0.75$, and $a_1 = 2$.

Note that for the case $M/M/1$ we have from Eqs. (2.9), (2.10), and (3.33) the following:

$$\bar{E}_{<a_1} = \frac{1}{\mu} (1 - e^{-\mu a_1}) = 0.865 \quad (4.3)$$

$$\bar{t}_{<a_1}^2 = \frac{2}{\mu^2} [1 - e^{-\mu a_1} - \mu a_1 e^{-\mu a_1}] = 1.19 \quad (4.4)$$

$$\bar{a} = e^{-\mu a_1} / (1 - \lambda \bar{E}_{<a_1}) = 0.385 \quad (4.5)$$

Also, for the parameter values chosen, we have $C = 2.42$. From Eq. (3.1) we see that the response time for the FB system is completely independent of the values a_i and therefore the curve shown in Fig. 4.1 for this response time is applicable to all of our $M/M/1$ cases. Note the inflection point in this curve which results in a linear growth for response time as $t \rightarrow \infty$ (a phenomenon not observable from previously published figures). As can be seen from its defining equation, the response time for FCFS is linear regardless of the level; the RR system at level 1 is also linear, but as we see from this figure and from Eq. (3.37) the RR at level $N+1$ is non-linear. Thus one can determine the behavior of any of nine possible disciplines from Fig. 4.1. Adiri and Avi-Itzhak considered the case (FB, RR) [12].

Continuing with the case $M/M/1$, we show in Fig. 4.2 the case for $N = 3$ where $D_1 = RR$, $D_2 = FB$, $D_3 = FCFS$, and $D_4 = RR$. In this case we have chosen $a_i = i$ and $\mu = 1$, $\lambda = 0.75$. We also show in this figure the case FB over the entire range as a reference curve for comparison with this discipline. Note (in general for $M/M/1$) that the response time for any discipline in a given level must either coincide with FB curve or lie above it in the early part of the interval and below it in the latter part of the interval; this is true due to the conservation law [10].

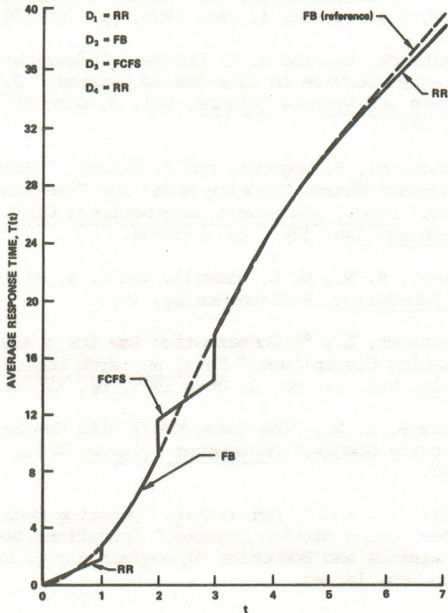


Figure 4.2. Response Time for an Example of $N = 3$, $M/M/1$, $\mu = 1$, $\lambda = 0.75$, $a_i = i$

The third example for $M/M/1$ is for the iterated structure $D_1 = FCFS$. Once again we have chosen $\mu = 1$, $\lambda = 0.75$, and $a_i = i$.

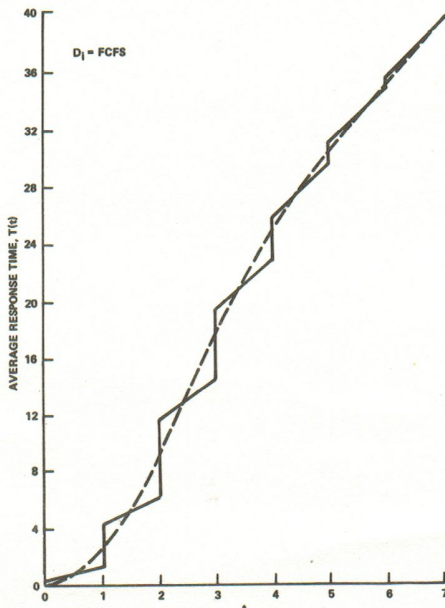


Figure 4.3. Response Time for the $M/M/1$ Iterated Structure, $\mu = 1$, $\lambda = 0.75$, $a_i = i$, $N = \infty$

Also shown in this figure is a dashed line corresponding to the FB system over the entire range. Clearly, one may select any sequence of FB and FCFS with duplicates in adjacent intervals and the behavior for such systems can be found from Fig. 4.3. It is interesting to note in the general $M/G/1$ case with $D_i = FCFS$ that we have a solution for the FB system with finite quantum $q_i = a_i - a_{i-1}$ where preemption within a quantum is permitted!

For our last example we choose the system $M/E_2/1$ with $N = 1$. In this system we have

$$\frac{dB(x)}{dx} = (2\mu)^2 x e^{-2\mu x} \quad x \geq 0 \quad (4.6)$$

as shown in Fig. 4.4. We note that the mean service time here is again given by $1/\mu$; the second moment of this distribution is $3/2\mu^2$. We calculate

$$\bar{E}_{<a_1} = \frac{1}{\mu} - \frac{1}{\mu} e^{-2\mu a_1} [1 + 2\mu a_1 + 2(\mu a_1)^2] \quad (4.7)$$

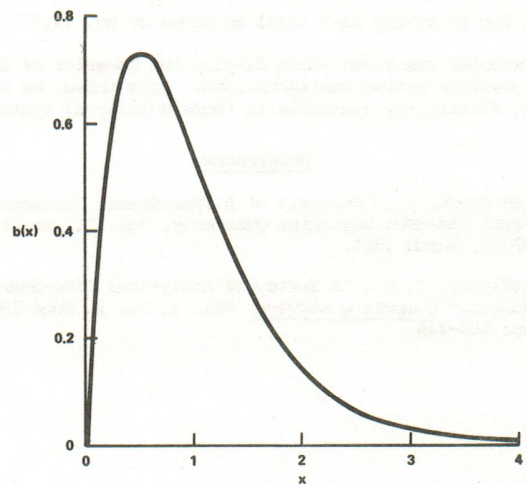


Figure 4.4. Service Time Density for $M/E_2/1$, $\mu = 1$

We choose the system $N = 1$ with $D_1 = RR$ and $D_2 = FCFS$. For the cases $a_1 = 1/2\mu, 1/\mu, 2/\mu, 4/\mu$ with $\mu = 1$ and $\lambda = 0.75$ we show in Fig. 4.5 the behavior of this system.

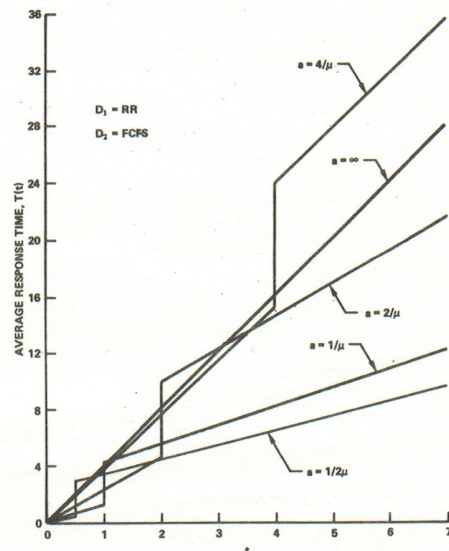


Figure 4.5. Response Time for RR, FCFS in $M/E_2/1$ with $\mu = 1$, $\lambda = 0.75$ and $a = 1/2, 1, 2, 4, \infty$

This figure demonstrates again the kind of behavior obtainable from our results as one varies the appropriate system parameters; once again one may choose to discriminate in a variety of ways in favor of the short jobs and against the longer jobs.

5. CONCLUSION

Our purpose has been to generalize results in the modeling and analysis of time-shared systems. The class of systems considered was the processor-sharing systems in which various disciplines were permitted at different levels of attained service. The principle results for M/G/1 are the following: (1) The average conditional response time at level i is independent of the queueing discipline at all other levels; (2) the performance for the FB discipline at any level is given by Eq. (3.1); (3) the performance for the FCFS discipline is linear with t within any level and is given by Eq. (3.2); (4) the performance for the RR discipline at the first level is well-known [8] and is given by Eq. (3.6); (5) an integral equation for the average conditional response time for RR at any level (equivalent to bulk arrival RR) is given by Eq. (3.21) and remains unsolved in general. For M/GM/1 (exponential tail for $t > a_N$) we have the performance for RR at the last level as given by Eq. (3.37).

Examples are given which display the behavior of some of the possible system configurations. From these, we note the great flexibility available in these multilevel systems.

References

1. Kleinrock, L., "Analysis of A Time-Shared Processor," Naval Research Logistics Quarterly, Vol. II, No. 1, pp. 59-73, March 1964.
2. McKinney, J. M., "A Survey of Analytical Time-Sharing Models," Computing Surveys, Vol. 1, No. 2, June 1969, pp. 105-116.
3. Takacs, L., "A Single-Server Queue with Feedback," Bell System Technical Journal, March 1963, pp. 505-519.
4. Kleinrock, L., "Time-Shared Systems: A Theoretical Treatment," JACM, Vol. 14, No. 2, April 1967, pp. 242-261.
5. Kleinrock, L., and E. G. Coffman, "Feedback Queueing Models for Time-Shared Systems," JACM, Vol. 15, No. 4, October 1968, pp. 549-576.
6. Coffman, E.G., Jr., R.R. Muntz, and H. Trotter, "Waiting Time Distributions for Processor-Sharing Systems," JACM, Vol. 17, No. 1, Jan. 1970, pp. 123-130.
7. Kleinrock, L., and E. G. Coffman, "Distribution of Attained Service in Time-Shared Systems," J. of Computers and Systems Science, Vol. 3, October 1967, pp. 287-298.
8. Sakata, M., S. Noguchi, and J. Oizumi, "Analysis of a Processor-Shared Queueing Model for Time-Sharing Systems," Proc., 2nd Hawaii International Conf. on System Sciences, Jan. 1969, pp. 625-628.
9. Conway, R. W., W. L. Maxwell, and L. W. Miller, Theory of Scheduling, Addison-Wesley, 1967.
10. Kleinrock, L., "A Conservation Law for a Wide Class of Queueing Disciplines," Naval Research Logistics Quarterly, Vol. 12, No. 2, June 1965, pp. 181-192.
11. Schrage, L. E., "The Queue M/G/1 with Feedback to Lower Priority Queues," Management Science, Vol., 13, No. 7, 1967.
12. Adiri, I., and B. Avi-Itzhak, "Queueing Models for Time-Sharing Service Systems," Operations Research, Statistics and Economics Mimeograph Series No. 27, Technion, Israel.